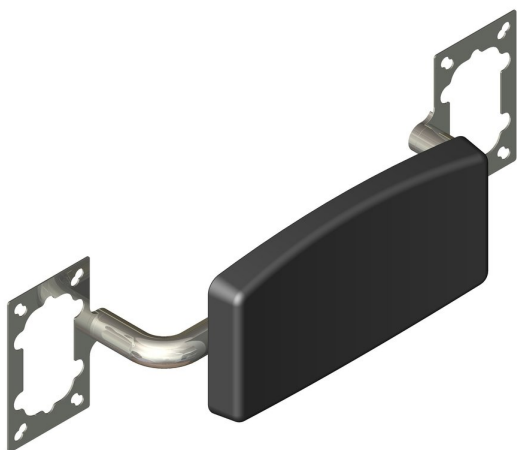
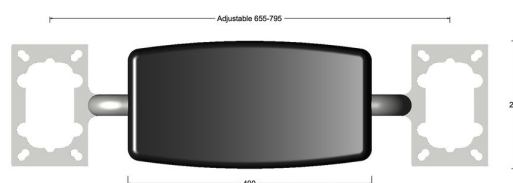


## Adjustable backrest with bkt for TWO drop down rails



Product image



Dimensions drawing (DIM)

**Reference**

FGR149 2B PPS

**Finish**

Incasa polished stainless steel

**Material**

Stainless steel 316

**Description**

Heavy duty adjustable padded backrest  
 Two fixing plates for hinged support rail  
 Concealed fixings  
 150kg weight capacity  
 Conforms to EN 12182  
 Fixing packs available for most wall constructions