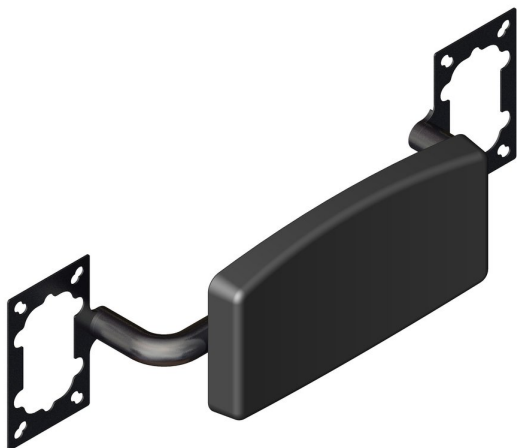
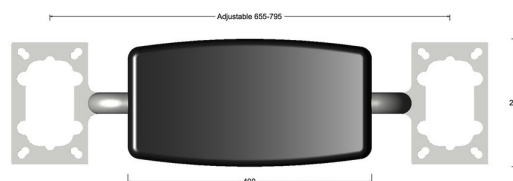


Adjustable backrest with bkt for TWO drop down rails



Product image



Dimensions drawing (DIM)

Reference

FGR149 2B SPVDBK

Material

Stainless steel 316

Finish

Incasa satin PVD black

Description

Heavy duty adjustable padded backrest
 Two fixing plates for hinged support rail
 Concealed fixings
 150kg weight capacity
 Conforms to EN 12182
 Fixing packs available for most wall constructions