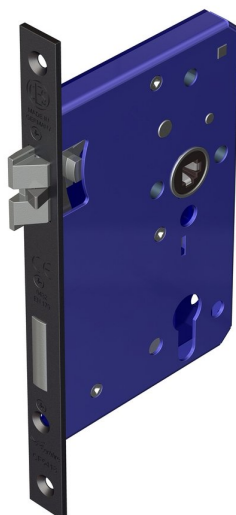


Mortice escape lock with triple latch



Product image



Dimensions drawing (DIM)

Reference

FTL008S 80 SPVDBK

Finish

Incasa satin PVD black

Forend shape

Square forend

Material

Stainless steel 316

Backset

80mm backset

Description

Low friction triple latchbolt for reduced closing force
 Bushed TENAX clamped follower
 Holed for euro profile cylinder
 Multiple backsets to suit different door stiles
 Tested to EN 12209 grade X
 Suitable for timber fire doors up to FD120
 Certifire tested
 UKCA marked