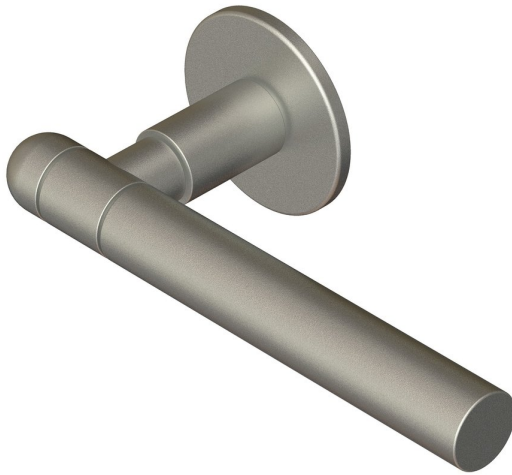
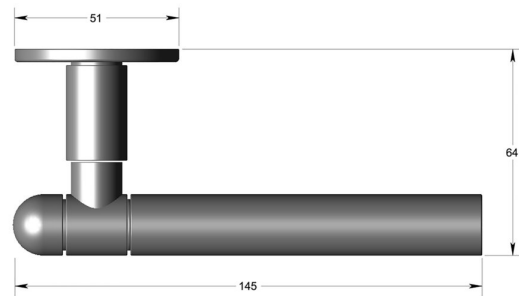


Section lever handle 19mm diameter on round
rose - Round end



Product image



Dimensions drawing (DIM)

Reference

FL109 RE RR4 SSS

Finish

Incasa satin stainless steel

Material

Stainless steel 316

Shape

RR4

Description

Solid lever handle
Concealed fixing
High performance bearing rose
Back to back fixing
Conforms to EN1906 high usage
Suitable for use on fire doors